

NOTICE OF PUBLIC OPEN HOUSE

RIFLE GARFIELD COUNTY AIRPORT MASTER PLAN UPDATE

The County will host a public open house to present the information in the study in an open, conversational format. The open house will allow users of the Airport and public to review the findings, learn about proposed developments and provide feedback. Attendees can arrive at any time during the scheduled time to explore informational displays, maps, and materials at their own pace. County and consultant staff will be on-hand to answer questions, provide additional information, and collect comments.

SCHEDULE:

Date: 12/4/2025

Time: 4:30 pm – 6:00 pm (MT)

Location: Rifle Garfield County Airport Administration Building – Conference Room

PUBLIC REVIEW OPTION FOR THOSE UNABLE TO ATTEND

Those unable to attend the public open house may still review the conceptual development plans and provide comments or questions to the planning team. The Materials below will be presented at the Open House, allowing community members to stay informed and participate in the Master Plan Update process at their convenience. **Please note that layouts shown are conceptual in nature and do not constitute final development plans, as required by FAA.**

Feedback, questions, and general comments may be submitted electronically to the project team. Input will be reviewed and considered as part of the Master Plan Update.

RIFLE GARFIELD COUNTY AIRPORT MASTER PLAN UPDATE

Overview

The Airport Master Plan is a long-term planning study to evaluate existing facilities and future development needs for the Rifle Garfield County Airport operated by Garfield County:

Purpose

An **Airport Master Plan** is a long-term planning document that guides the future development of an airport. It provides a roadmap for how the airport will grow and adapt over the next 20 years or more, ensuring that facilities, infrastructure, and operations can meet future demand safely and efficiently. The plan looks at current conditions, forecasts future air traffic, and identifies the improvements needed to support aviation demand and the surrounding community.

The process involves studying various aspects of the airport including runways, taxiways, terminals, parking, roadways, and other key airport components, while also considering environmental, economic, and community factors. Public input is an important part of the master plan process, helping ensure the final plan reflects community priorities and values.

Ultimately, the master plan does **not** authorize construction—it serves as a guiding document to help airport leaders, County officials, and the Federal Aviation Administration (FAA) make informed decisions about future projects and investments. It ensures that the airport can continue to operate safely, efficiently, and responsibly as needs evolve over time.

*The FAA requires airport sponsors that receive federal funding to keep their airport layout plans updated.

Objectives

- Inventory existing airport facilities and conditions
- Define role of the airport
- Determine compliance with FAA design standards
- Establish priorities and a phasing plan for development
- Ensure the airport compliments and supports local/regional development
- Provide a graphic representation of development
- Prepare cost estimates and Capital Improvement Plan (CIP)

What an Airport Master Plan does **NOT** do

- Commit the County to airport development
- Guarantee funding for recommended development
- Grant environmental clearance for recommended development
- Comprehensively evaluate features such as utility infrastructure, drainage, etc.
- Evaluate strategies to attract airport business

WELCOME!

→ *Rifle Garfield County Airport Master Plan*

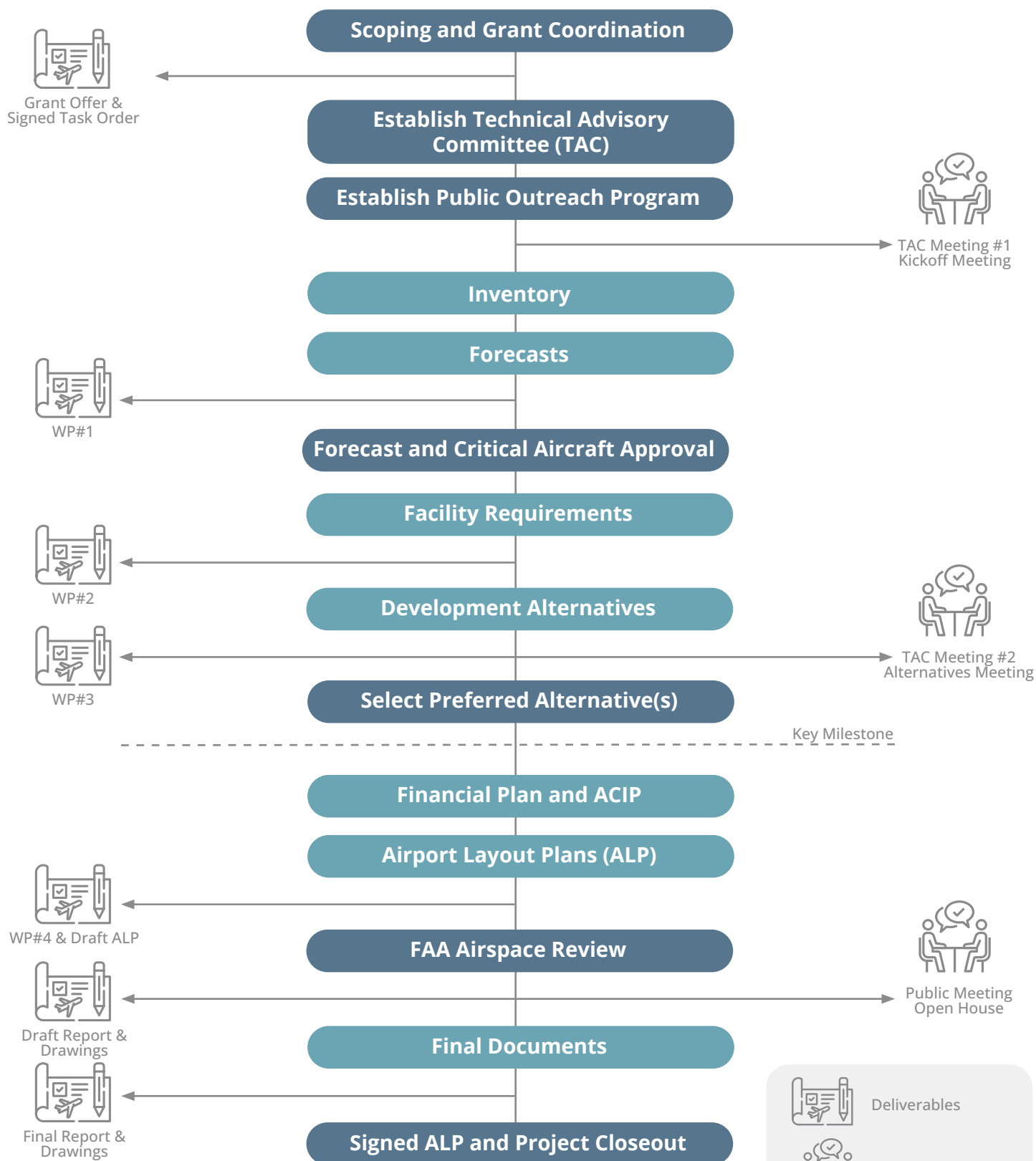
OPEN HOUSE

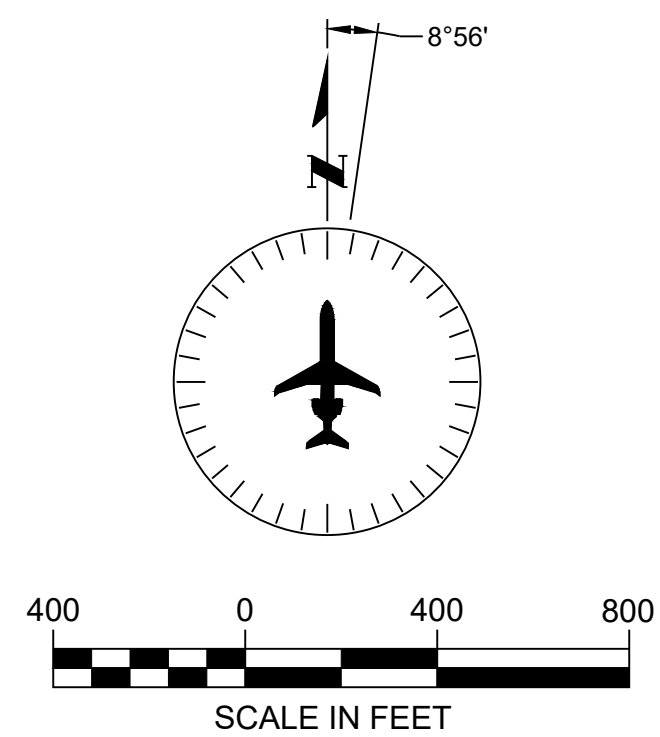
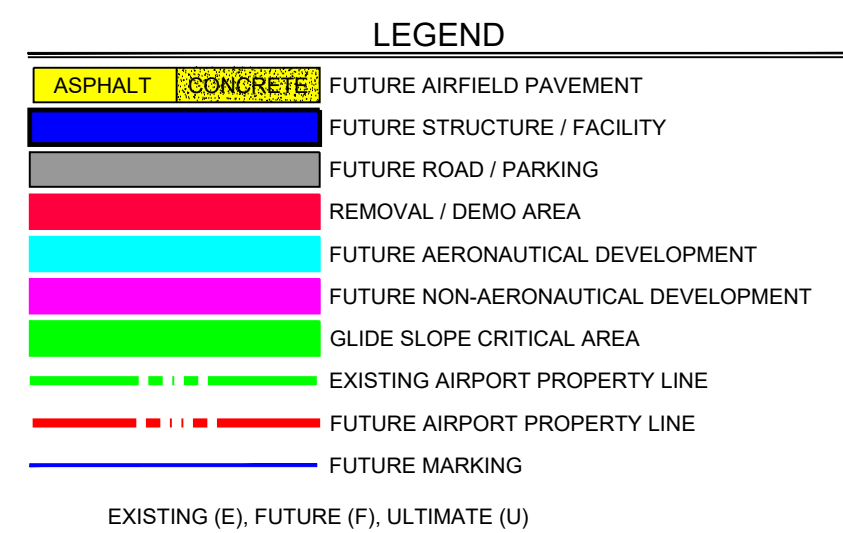
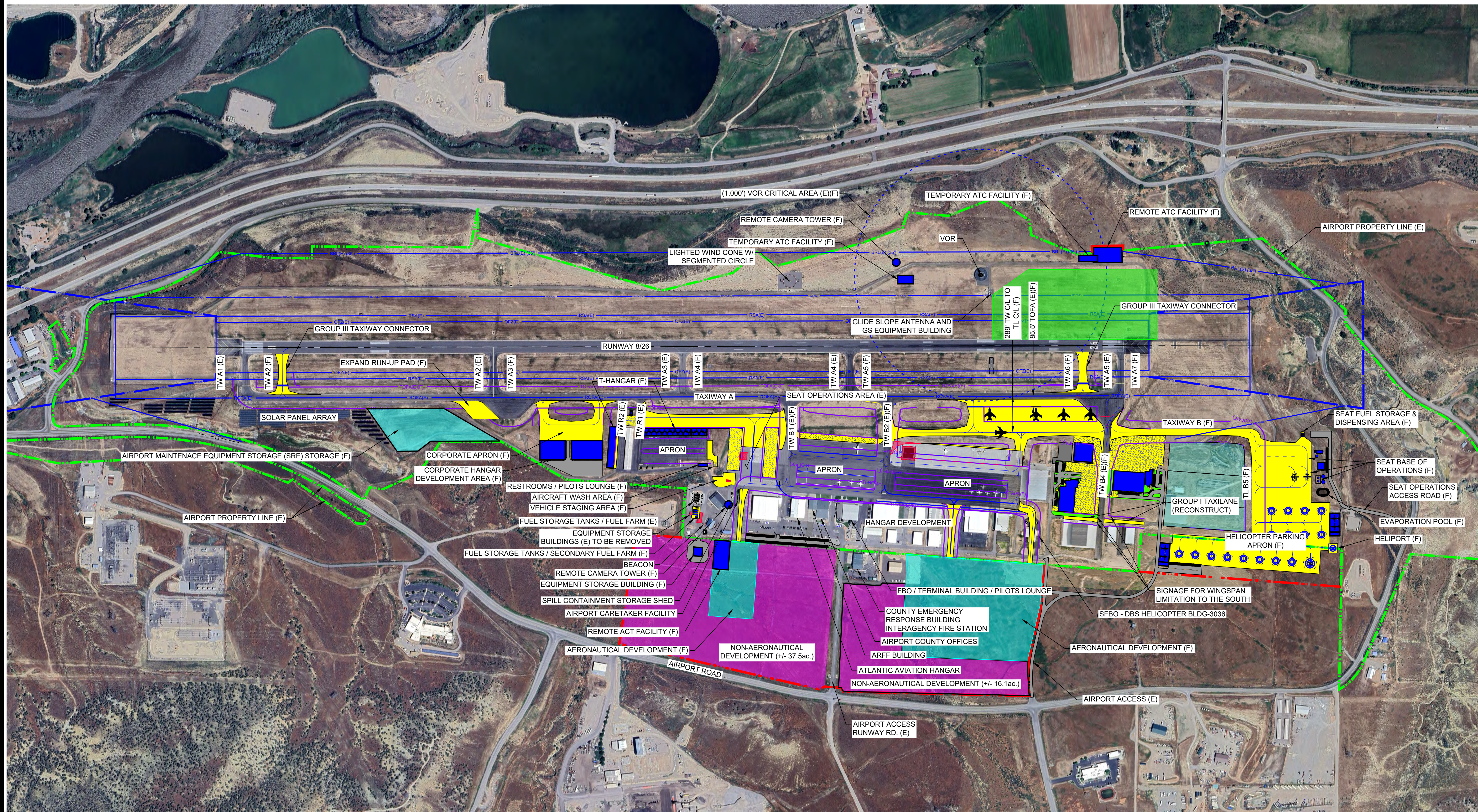








Explore - Learn - Share Your Input

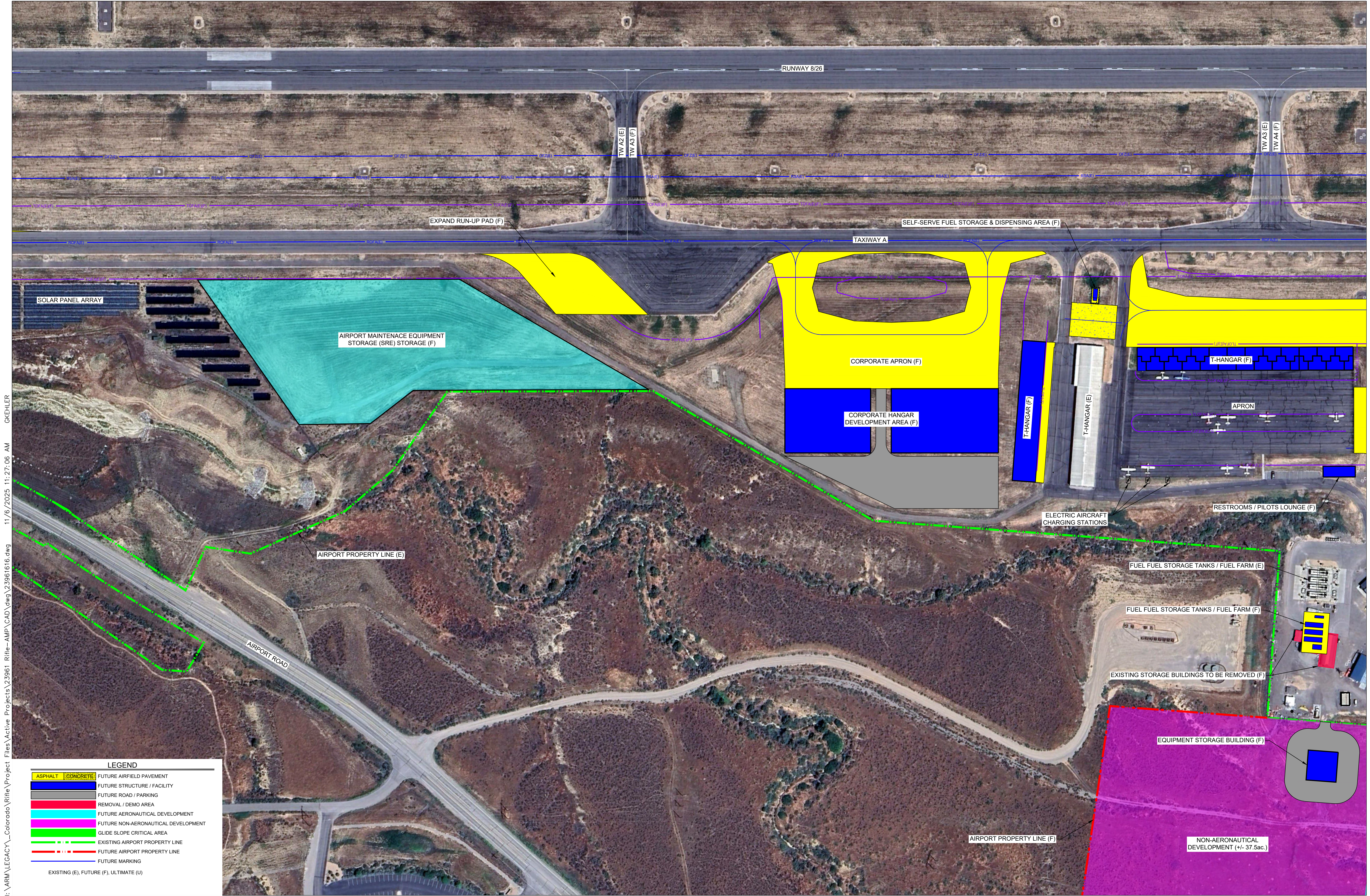
- **View Conceptual Design Boards**
- **Ask Questions** - Project team members are available to answer questions
- **Share Your Feedback** - with project team or comment forms
- **View At Your Own Pace** - This is an open format; no formal presentation is scheduled

THE AIRPORT MASTER PLAN PROCESS





LEGEND		
EXISTING	FUTURE	DESCRIPTION
N/A		AIRFIELD DEVELOPMENT
N/A		STRUCTURE/FACILITIES (BUILDING)
		AIRPORT PROPERTY LINE (APL)
—RSA(E)	—RSA(F)	RUNWAY SAFETY AREA (RSA)
—OFZE)	—OFZF)	OBSTACLE FREE ZONE (OFZ)
—ROFA(E)	—ROFA(F)	RUNWAY OBJECT FREE AREA (ROFA)
—RPZE)	—RPZF)	RUNWAY PROTECTION ZONE (RPZ)
—BRL(E)	—BRL(F)	BUILDING RESTRICTION LINE (BRL)
—TOFA(E)	—TOFA(F)	TAXIWAY OBJECT FREE AREA (TOFA)
N/A		MARKINGS
N/A		TO BE REMOVED



I:\ARM\LEGACY\Colorado\Rifle\Project_Files\Active Projects\23961 Rifle-AMP\CAD\dwg\23961616.dwg 11/6/2025 11:27:06 AM GKEHLER

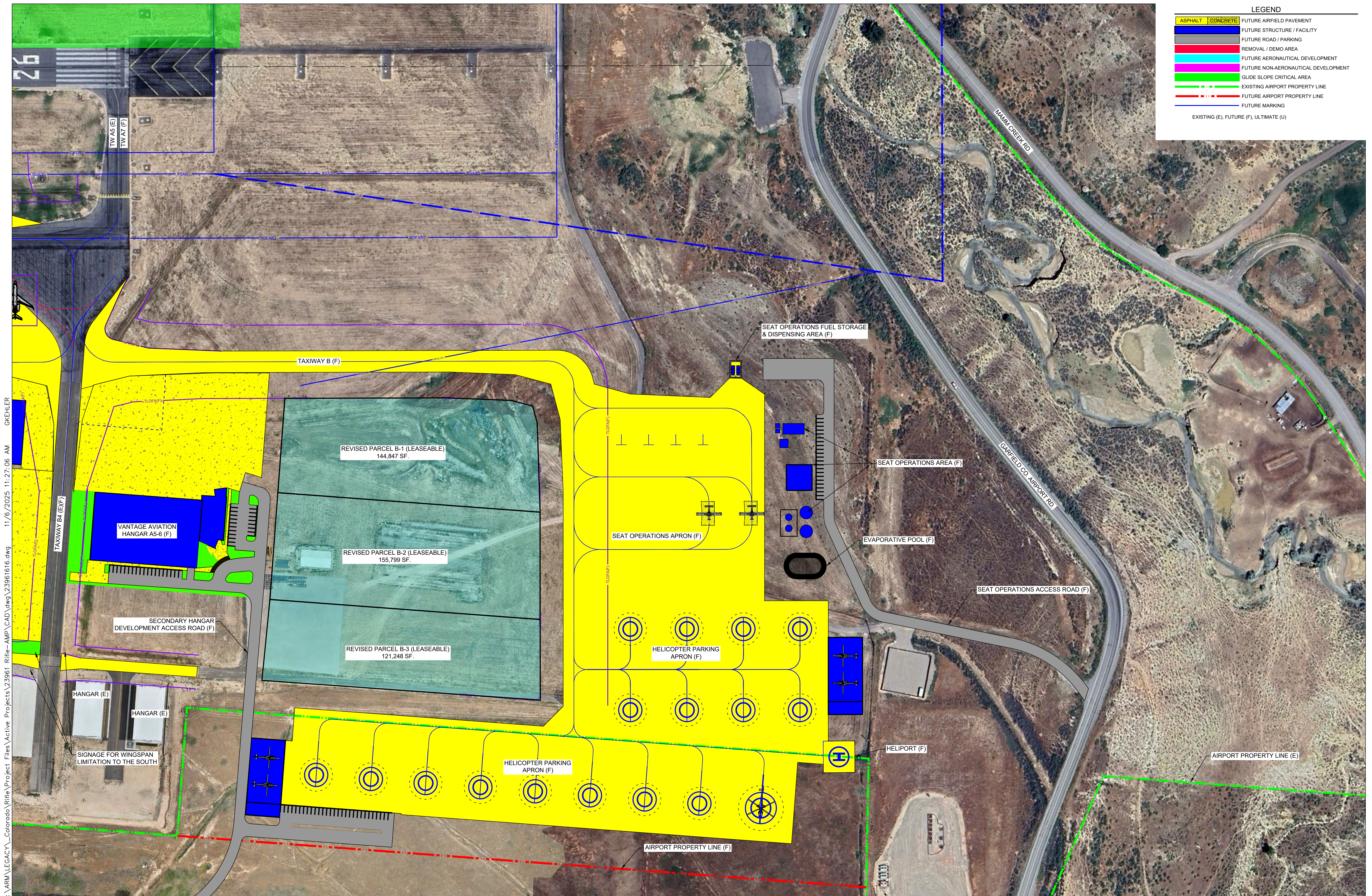
LEGEND	
<div><div>ASPHALT</div><div>CONCRETE</div></div>	FUTURE AIRFIELD PAVEMENT
<div><div></div><div></div></div>	FUTURE STRUCTURE / FACILITY
<div><div></div><div></div></div>	FUTURE ROAD / PARKING
<div><div></div><div></div></div>	REMOVAL / DEMO AREA
<div><div></div><div></div></div>	FUTURE AERONAUTICAL DEVELOPMENT
<div><div></div><div></div></div>	FUTURE NON-AERONAUTICAL DEVELOPMENT
<div><div></div><div></div></div>	GLIDE SLOPE CRITICAL AREA
<div><div></div><div></div></div>	EXISTING AIRPORT PROPERTY LINE
<div><div></div><div></div></div>	FUTURE AIRPORT PROPERTY LINE
<div><div></div><div></div></div>	FUTURE MARKING
EXISTING (E), FUTURE (F), ULTIMATE (U)	

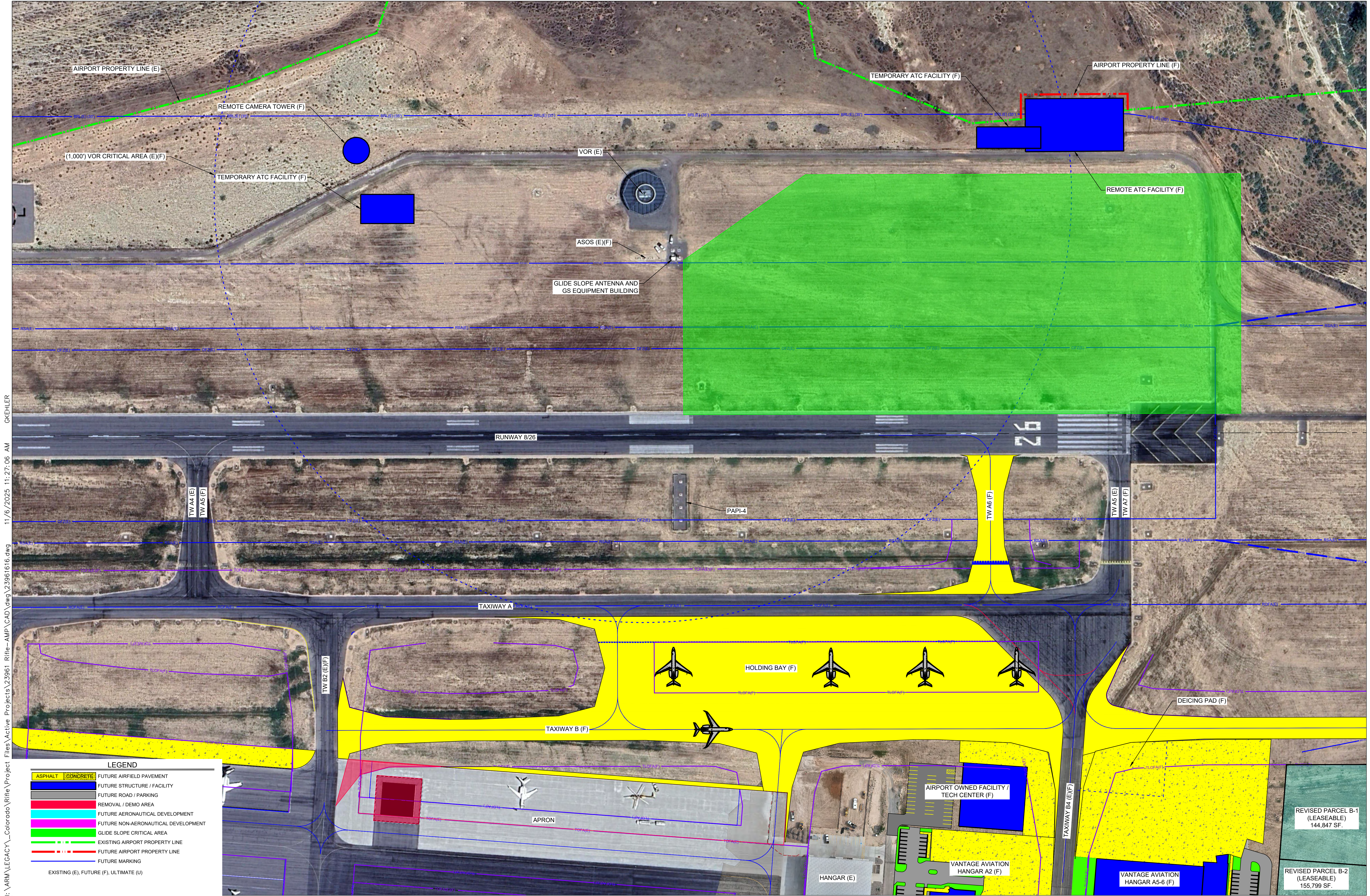


LEGEND

ASPHALT	CONCRETE	FUTURE AIRFIELD PAVEMENT
		FUTURE STRUCTURE / FACILITY
		FUTURE ROAD / PARKING
		REMOVAL / DEMO AREA
		FUTURE AERONAUTICAL DEVELOPMENT
		FUTURE NON-AERONAUTICAL DEVELOPMENT
		GLIDE SLOPE CRITICAL AREA
		EXISTING AIRPORT PROPERTY LINE
		FUTURE AIRPORT PROPERTY LINE
		FUTURE MARKING
EXISTING (E), FUTURE (F), ULTIMATE (U)		

I:\ARM\LEGACY\Colorado\Rifle\Project Files\Active Projects\23961 Rifle-AMP\CAD\dwg\23961616.dwg 11/6/2025 11:27:06 AM GKEHLER

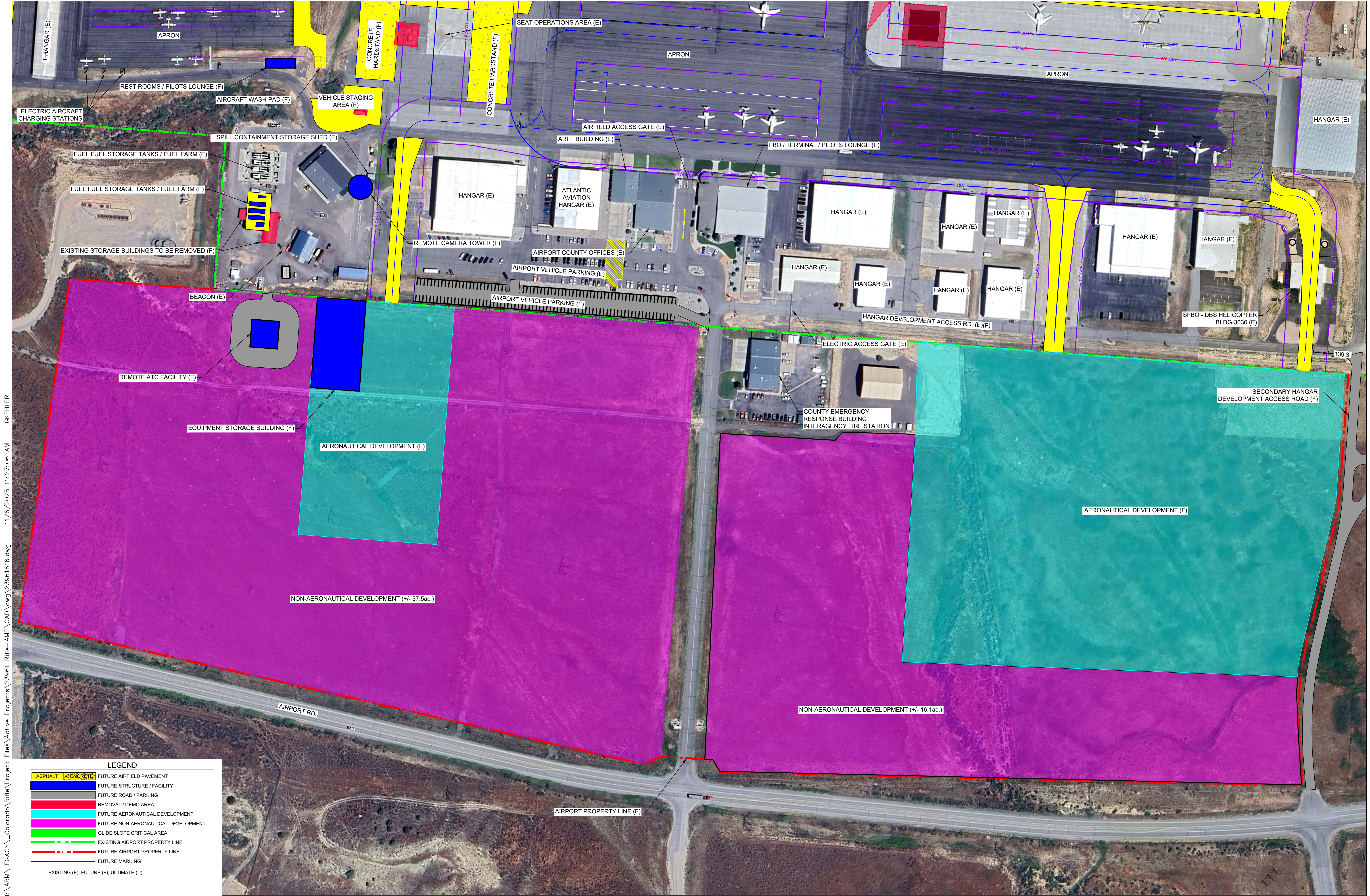




I:\ARM\LEGACY\Colorado\Rifle\Project Files\Active Projects\23961 Rifle-AMP\CAD\dwg\23961616.dwg 11/6/2025 11:27:06 AM GKEHLER

LEGEND

ASPHALT	CONCRETE	FUTURE AIRFIELD PAVEMENT
		FUTURE STRUCTURE / FACILITY
		FUTURE ROAD / PARKING
		REMOVAL / DEMO AREA
		FUTURE AERONAUTICAL DEVELOPMENT
		FUTURE NON-AERONAUTICAL DEVELOPMENT
		GLIDE SLOPE CRITICAL AREA
		EXISTING AIRPORT PROPERTY LINE
		FUTURE AIRPORT PROPERTY LINE
		FUTURE MARKING
		EXISTING (E), FUTURE (F), ULTIMATE (U)



I:\ARW\LEGACY\Colorado\Rifle\Project Files\Active Projects\23961 Rifle-AMP\CAD\dwg\23961616.dwg 11/6/2025 11:27:06 AM GKEHLER

LEGEND	
ASPHALT	FUTURE AIRFIELD PAVEMENT
CONCRETE	FUTURE STRUCTURE / FACILITY
	FUTURE ROAD / PARKING
	REMOVAL / DEMO AREA
	FUTURE AERONAUTICAL DEVELOPMENT
	FUTURE NON-AERONAUTICAL DEVELOPMENT
	GLIDE SLOPE CRITICAL AREA
	EXISTING AIRPORT PROPERTY LINE
	FUTURE AIRPORT PROPERTY LINE
	FUTURE MARKING
EXISTING (E), FUTURE (F), ULTIMATE (U)	